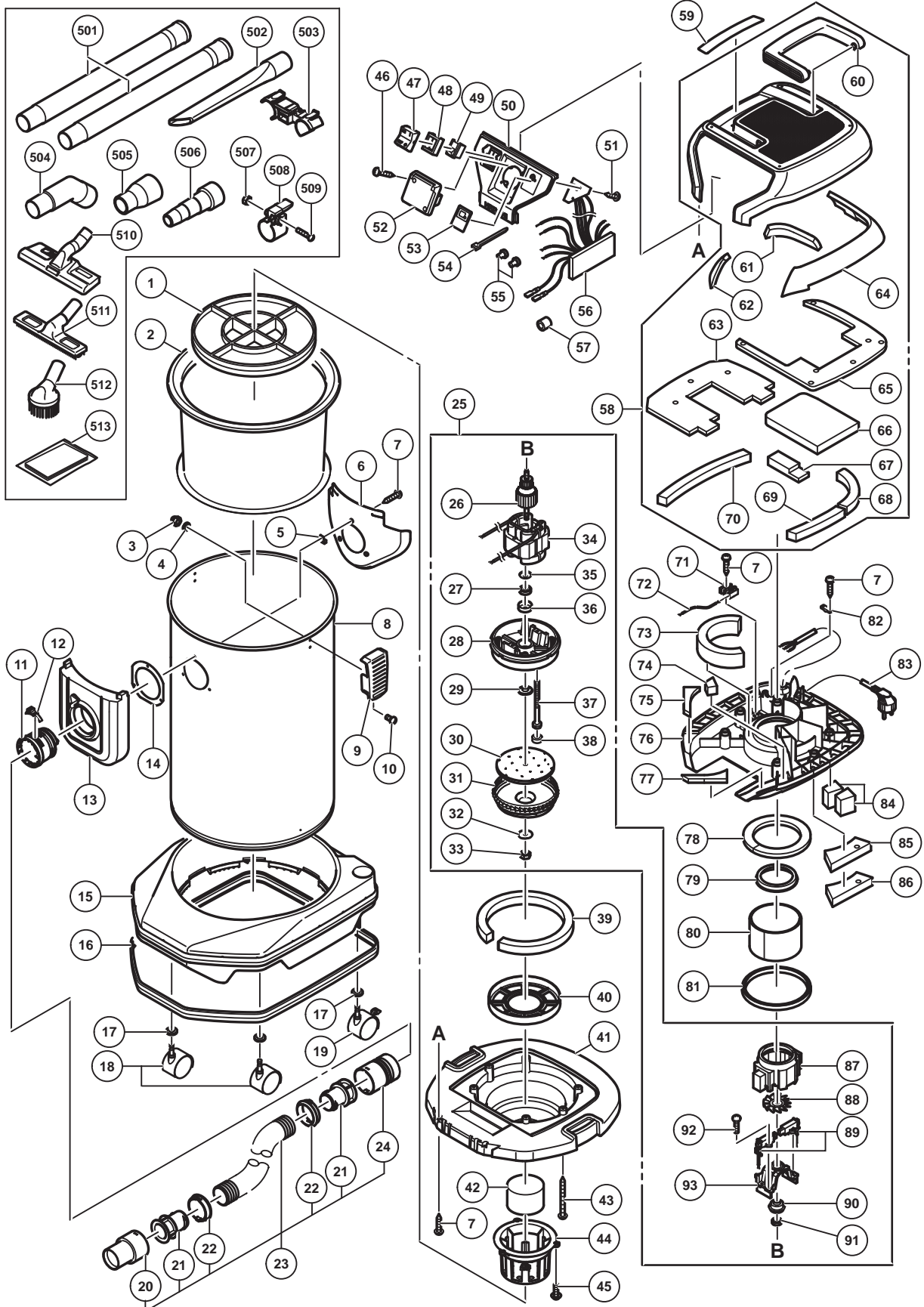


ELECTRIC TOOL PARTS LIST

■ DUST COLLECTOR Model RP 350YE

2015-2-10
(E1)



PARTS

RP 350YE

| ITEM NO. | CODE NO. | DESCRIPTION | NO. USED | REMARKS |
|----------|----------|--|----------|--------------------|
| 1 | 325869 | FILTER CAGE | 1 | |
| 2 | 337459 | DRY DUST FILTER (25L- 35L W/WET AND DRY) | 1 | |
| 3 | 311839 | HEX. CAP NUT M4 | 4 | |
| 4 | 949453 | SPRING WASHER M4 (10 PCS.) | 4 | |
| 5 | 337454 | EARTH PLATE | 1 | |
| 6 | 337453 | POLY GUIDE (B) | 1 | |
| 7 | 301653 | TAPPING SCREW (W/FLANGE) D4 X 20 (BLACK) | 8 | |
| 8 | 337444 | TANK | 1 | |
| 9 | 334398 | CLAMP | 2 | |
| 10 | 323211 | MACHINE SCREW M4 X 8 (BLACK) | 4 | |
| 11 | 337451 | HOSE JOINT | 1 | |
| 12 | 321014 | HOSE STOPPER | 1 | |
| 13 | 337450 | JOINT COVER (B) | 1 | |
| 14 | 337448 | JOINT COVER PACKING | 1 | |
| 15 | 337443 | BASE (SUS) | 1 | |
| 16 | 325906 | BUMPER (A) | 1 | |
| 17 | 949433 | BOLT WASHER M8 (10 PCS.) | 5 | |
| 18 | 325858 | CASTER D50 | 3 | |
| 19 | 325859 | CASTER D50 (W/STOPPER) | 2 | |
| 20 | 320986 | SLEEVE (B) ID38 | 1 | |
| 21 | 337512 | SCREW RING (ID 38) | 2 | |
| 22 | 321066 | CLICK RING | 2 | |
| 23 | 337513 | HOSE ASS'Y ID38 | 1 | INCLUD.20-22,24 |
| 24 | 320985 | SLEEVE (A) ID38 | 1 | |
| 25 | 337472 | MOTOR ASS'Y | 1 | INCLUD.26-38,87-93 |
| 26 | | ARMATURE 230V | 1 | |
| 27 | | BALL BEARING 608VVCM | 1 | |
| 28 | | MOTOR BASE | 1 | |
| 29 | | FLANGE WASHER | 1 | |
| 30 | | FAN | 1 | |
| 31 | | CASING | 1 | |
| 32 | | SPECIAL WASHER | 1 | |
| 33 | | LOCK NUT M8 | 1 | |
| 34 | | STATOR 230V | 1 | |
| 35 | | PRESS PLATE | 1 | |
| 36 | | BEARING HOLDER (B) | 1 | |
| 37 | | BOLT (W/WASHER) M5 X 60 | 2 | |
| 38 | | RUBBER COVER | 2 | |
| 39 | 337477 | SILENT FILTER (C) | 1 | |
| 40 | 334977 | SUPPORT RING (B) | 1 | |
| 41 | 337469 | MOTOR BASE (B) | 1 | |
| 42 | 338455 | FLOAT | 1 | |
| 43 | 301815 | TAPPING SCREW (W/FLANGE) D4 X 45 (BLACK) | 6 | |
| 44 | 337456 | FLOAT HOLDER (A) | 1 | |
| 45 | 994810 | SCREW (PLASTIC TIE) D4 X 16 | 3 | |
| 46 | 313687 | TAPPING SCREW (W/FLANGE) D3 X 16 (BLACK) | 2 | |
| 47 | 337502 | SWITCH COVER | 1 | |
| 48 | 337503 | SWITCH PACKING | 1 | |
| 49 | 338471 | SWITCH (B) | 1 | |
| 50 | 337495 | SWITCH HOLDER (D) | 1 | |

